

GODALMING MINSTER

Is looking for:

**An Associate Minister for
Hambleton & Discipleship**

And

**An Associate Minister
for Franklyn Road &
Mission and Evangelism**



Parish
Profile



Contents

Welcome, vision & priorities	1
Who we are	2
Mission Field	3
Five years from now	4
Centres of worship & mission	5
Who we are looking for	7
About Hambledon & Franklyn Rd	8
Wider Minster context	12
Sunday worship	14
Culture	16
Leadership characteristics	17
Houses, Tenure and Finance	20
Next steps	21
Role specifications	22

**"We're building
God's future to
become a resource
Minster of teaching,
preaching, prayer,
worship, care,
discipleship,
resourcing others,
provision and taking
our place in the
wider area as we
proclaim Christ and
live His risen life"**

~ Simon, Rector



Hello.

Thanks for considering becoming a leader in Godalming Minster. You'll therefore be interested in one of our two missional clergy posts that are available. Come and be part of something that God is growing and energising people's faith.

We're not looking for people who can do everything themselves as the Minster has a strong support team. The roles require the ability to inspire people, and a heart for people to know Jesus, live by the Spirit and grow in Christian faith.

Each post has a local focal-ministry element and the oversight and leadership of an important Minster-wide priority area. Central to the roles is the heart and ability to foster teams, encourage people's participation and raise new leaders.

In Christ, Simon, Rector of Godalming Minster

The Vision



Following Jesus, loving people and renewing faith

Following Jesus is our commitment to nurture and **deepen discipleship** and involves shaping and developing our existing network of small groups, individual and communal prayer life, the exercising of spiritual gifts and stewardship.

Loving People is putting **mission and evangelism** at the heart of our identity as disciples of Jesus, and meeting the needs of our local communities across the parish.

Renewing Faith is our intention to **grow younger** in everything we do. It focuses us on youth and children's ministry and our work in schools, as well as identifying new leaders and people to serve in younger generations, and shaping our worship and activities accordingly. (Though not at the expense of our Older People's ministry and respecting our rich heritage, which we cherish.)

What the priority areas look like now

Following Jesus

- Diversity of worship and preaching
- 14 home groups
- One year discipleship-leadership course
- Short courses eg Bible course
- Congregational leadership teams to grow each congregation

Loving People

- Foodbank
- Hearing Aid clinics
- Older people's ministry
- Social (warm) hub
- Yew Tree Café
- Alpha & Baptism courses
- Alpha follow up course
- Bereavement Support

Renewing Faith

- Schools ministry
- Toddler groups
- Holiday clubs and Light parties
- Church in the Park and Messy Church
- Jam Together / youth bands
- Youth café and Friday night social

Who we are



Godalming Minster is a fresh take on the ancient idea of a resourceful Christian community of care, teaching, nurture and worship which serves its area to grow disciples of Jesus and share the gospel with people. It's an exciting time because the Minster was born in January 2024 after two years of prayer and preparation.

We have four landmark church buildings, two C of E primary schools, a ministry hub, a community centre and a café which are the hives for worship and mission activities. Our regular congregations span the 1662 BCP, choral tradition, contemporary, classic, Messy and "Muddy Church" or "Church in the Park" and Charismatic so that everyone can find a spiritual home and expression. Together the congregations involve about 400 people, with many more who participate in outreach activities.

As well as people born in the area and longstanding church members, over the years people have moved here from elsewhere, so our congregations include people who used to be involved in KXC, HTB and others. Church members regularly attend New Wine and Spring Harvest. The church leadership team attends CCX and HTB conferences. We work together out of a great shared church office hub which enables us to laugh together and support one another, coordinate administration, communications, care and other areas of ministry.

"We're fun, friendly and vibrant where everyone is welcome and there's something for everyone across all the services and congregations."

~ Gemma, children's team leader

Our passion is for children and young people and to nurture faith and relationship with Jesus in brand new generations. This is reflected in our provision for 0-18s, our investment in paid staff positions, our work with four local schools, and an expectation that everyone has a part to play in the vision.

We're on a journey! We struggle with our faith, and the demands of time and busy lives. There's quite a lot of high expectation and desire for good quality provision. However, you'll join a committed staff team and a family who serve faithfully. You'll minister in a context where following Jesus, loving people and renewing faith means that evangelism, Christian discipleship, becoming a younger church and loving outreach all matter.

The Mission Field

The Godalming area that comprises the Minster serves approximately 13,000 people within Godalming and a further 1,100 people in the Hambledon-rural area. It's a picturesque part of Surrey, 4 miles from Guildford, with good links to the South Coast. Two local stations, one in Godalming and the other near Hambledon, have fast trains to London.

Godalming and the villages locality is known for its historic charm and beautiful surroundings. In the wider area there are several gyms and sports centres with swimming facilities. There is an active social life in the area. The town and nearby villages offers a blend of rich history, scenic landscapes, and a vibrant community.

Within this, there are areas of historic need which are undergoing regeneration. Some parts of the Franklyn Road area are included in this.

Godalming has many coffee shops and restaurants and it's a busy place. There's a growing trend in the Godalming area for people to home-work for all or part of the week. The Minster's Yew Tree Café at our Brighton Road site regularly has home-workers using it and it forms part of our call to create community. (Follow [yewtreecafegodalming](#))

Education provision includes state and private schools and Godalming 6th Form College. Charterhouse is in the Minster's parish and we have two church primary/junior schools. Nearby good secondary schools are [Rodborough](#) and [Broadwater](#), where our youth director supports an ecumenical charity, [Trinity Trust Team](#), with PSHE support. King Edwards, Witley, is a private school near Hambledon and several of the staff worship in Minster congregations. There are nursery schools in both Hambledon village and around Godalming.

Just over half of the Minster's population identifies as Christian, followed by nones, at 45%.

The highest proportion of Christian affiliation is in Hambledon.

The lowest affiliations are in part of the Franklyn Road and the Brighton Road Busbridge areas.

"...bustling high street, enviably large houses and the sense of a corner of the country little used to political ruptures. To mark the 80th anniversary of D-day, the local shops were draped with an array of European flags; the scene in front of me seemed to crystallise the very English affluence that fosters calm and endless continuity....Its dominant middle class is educated, outward looking and fuller than ever of the values that define the capital city where so many local people make their living – conservative with a small "c", perhaps, but also discernibly modern. What really runs deep, moreover, are shared ideals about business and success" ~ The Guardian, 2024

"Godalming (area) is supremely popular with families for its excellent education, convenient transport links, and many recreational activities. For those that want to travel to London, Godalming strikes a perfect balance between a peaceful country village and a happening market town. As a spectacularly lush village in the famous Surrey countryside, Godalming is surrounded by other equally beautiful villages...resulting in a highly desirable place to relocate to." ~ Where's-Home 2024

"The Godalming (area) has been named the best place to live across 26 counties. The Surrey market town won the national vote for 'Best place to live 2022' in the Muddy Stiletto awards" ~ The Express Newspaper, 2023

Five Years From Now



The exciting vision and mission of **Following Jesus, Loving People and Renewing Faith** through **growing discipleship, mission, evangelism and becoming a younger church** means that we want to be a different place as part of God's Kingdom and we're longing for you to help us grow into this.

Belief

We'll be a centre of teaching excellence in matters of Christian belief, formation and character. Our training and discipleship of people will be centred on scripture, worship, prayer and the work of the Holy Spirit. We'll be a praying community that sees the God of miracles at work.

Collaboration and partnerships

We'll have developed a deep culture of collaboration with many of the Minster's community involved in all types of church and mission activity. We'll be respected by many for what we can offer by working with the council, charities and agencies for the good of the whole community.

Resource Church

We'll be a Minster of many teams of people who are focused on bringing the best of Christ's Church to the Godalming area. We'll share our resources with other churches. Our teams will be full of hospitality, with confident faith in Christ and able to share our faith story well.

Renewal

The wider area will be a renewed place of hope and people will want to live in the area because of the Minster's work of care, compassion, Christian teaching, prayer and worship.

Healing for life

We'll be known for our heart of love and compassion to bind people's wounds of life. Like Minsters of old, we'll be a hospital of healing in caring, listening, and Christ-centred support in life-stages of sadness and loss. We'll be bringing generations together and offer a culture of reconciliation through Christ.

Pathways

We'll have good pathways for encountering, exploring and coming to faith and then growing in becoming a disciple of Jesus who brings good to the World. Alpha and baptism courses will all be growing.



"Over the last 4 years, through regular worship and house groups, my faith and knowledge of God has grown deeper than I could imagine. I have found that Jesus is there with me, he comforts me and gives me strength as I carry the cross daily and in doing so, I have grown closer to God."
~ Seb, PCC member



Our Worship and Mission Centres

We've brought several worshipping communities together.

This enables us to bring resources, focus and purpose together under a Christian vision to follow Jesus, love people and renew faith.

The Minster is a spiritual identity, vision and culture. It is not about a particular building, worship style or location.

We have four locations that facilitate our worship and witness across the Minster:

Brighton Road | Church Street | Franklyn Road | Hambledon



Hambledon



Church Street



Franklyn Road



Church Street



Brighton Road



Franklyn Road



Hambledon

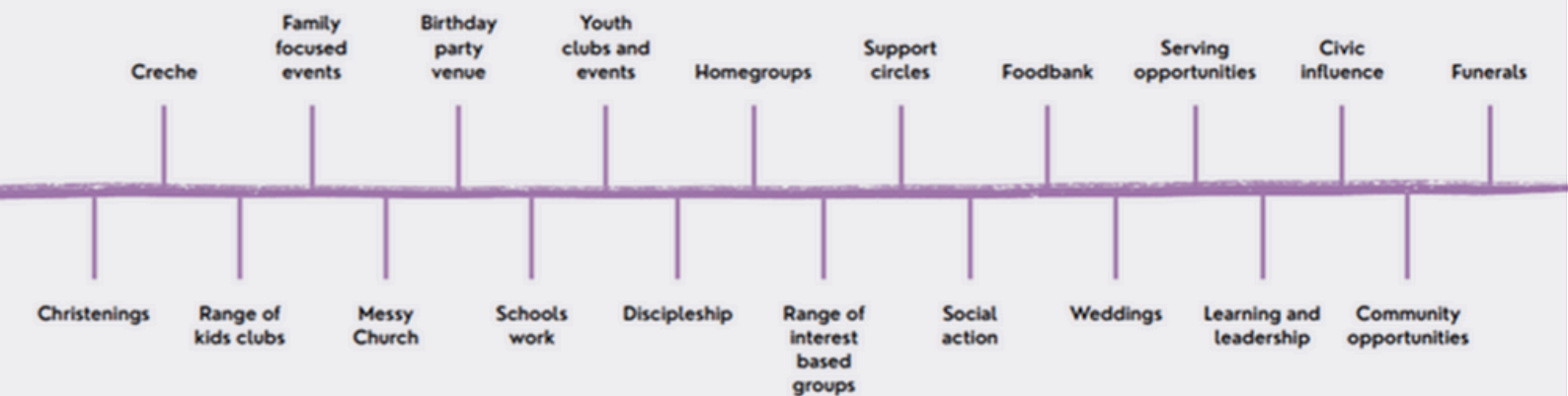
People gather at our locations from across the area based on the activities, style of worship and relationships. What matters to us as followers of Jesus is how we go into the community from our places of worship.



Worship does not belong to a location because worship is for God's glory as part of the whole of the Minster. This means that people travel from across the Minster and from an approximate radius of 10 miles to be part of the Minster.

A Minster that's for people, for life.

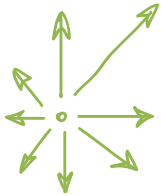
Our aim is to offer something for everyone across the Minster, which is meaningful and brings people closer to Jesus, from the cradle to the end of life.



Who Are We Looking For?



Associate Minister in Hambledon and for Discipleship. This person lives in Hambledon so is the congregational leader for Morning Worship at Hambledon. Your active involvement in the village means you'll serve the people of Hambledon.



Associate Minister in Franklyn Road and for Mission and Evangelism.

This person lives in the Franklyn Road area so is the congregational leader for the Morning Service congregation at Franklyn Road. By your presence you'll serve the people of Franklyn Road .



Please note that the Associate Minister's post for Franklyn Road and Mission and Evangelism is restricted to applicants for a post of first responsibility. This is due to SDF funding and it is initially a 3 year appointment. The Associate Minister for Hambledon and Discipleship is not a restricted post. Due to charity commission expectations about how funds are allocated, this is a two year, annually renewed rolling appointment. Rev Simon Willetts was formerly the minister in Hambledon and has the same terms as he enters his sixth year in the team. Simon is now the Associate Rector and will live in the Town Centre. Please phone (01483 421267) if you have questions about the funding.

Hambleton

This is the area where the **Associate Minister for Discipleship** lives. The role includes being visible within this locality. Hambleton includes the hamlets of Hydestyle and Enton and new high-end housing called Upper Tuesley, see: www.upper-tuesley-milford

The Hambleton area of the Minster is a quintessential village made up of long-standing locals, families who have moved to the village and people who have retired here. Many people have moved out of London for village life or for high quality education for their children.

There's a deep connection between village and church and the associate minister visibly supports the whole village community. There's an active football club and at least 30 village societies. The church, village hall, shop and pub are centres of a phenomenal level of community activity.

There's a strong sense of civic minded villagers who give their time and money to village causes and this includes generous financial support for having a minister in the village. The village community purchased the village shop to secure its future and the pub is a centre of culinary excellence, see: www.merryharriers.com



Annual Easter walk from Hambleton Church

There's a close relationship with Hambledon Nursery School and the associate minister is a Christian trustee. St Dominic's Complex Needs School is in the village. The biannual village festival attracts hundreds of people and includes jazz evenings, a village ball (400 attendees), fete and church service on the cricket green.



Hambledon Nursery School

There's an active Hambledon focused congregational team which supports worship planning, ministry to the village and pastoral care. Rev David Jenkins (SSM) and Dudley Hilton (LLM) are primarily committed to supporting the Associate Minister in Hambledon.

The Morning Worship congregation is committed, active and outward facing including running Messy Church and community worship events. There is also an additional regular livestream congregation that follows the Morning worship on youtube. The distinctive phrase for the Minster's Hambledon congregation is "true friendship in Christ". Hambledon was a centre of evangelical-charismatic renewal in the 1980s and 1990s. Some well-known figures in revival have a connection with Hambledon Church.

The church site has a car park, extensive grounds opening onto fields and the building has new livestreaming, audio and projector equipment. There's a modern extension with kitchenette, toilets and a well equipped community room. The vestry was recently upgraded and is a comfortable space for prayer.



Hambledon Church

Franklyn Road

The Minster's Morning Service at Franklyn Road is in an area comprising several groups of roads that comprise approx 1300 households. This is the area where the **Associate Minister for Mission and Evangelism** lives.



The deprivation index for some other parts of the area is 1% deprivation (4 dimensions) and 6.8% deprivation (3 dimensions), but there is a real mix across the area. It has seen significant changes in the past few years and has undergone regeneration. Community work has improved the index for Income Deprivation Affecting Children and Income Deprivation Affecting Older People. The sense of isolation that some people feel is due to this area of the Minster adjoining areas, including Charterhouse. These are some of the least deprived areas in Surrey.

Some parts of Franklyn Road, such as Eashing Lane, Hawthorn Road and Primrose Ridge, comprise established detached homes or terraced Victorian cottages. Other parts have been redeveloped in the past three years. There's also a new Cala Homes development called Ockford Park.

See: www.cala.co.uk/homes-for-sale/south-east-england/surrey/ockford-parks

Franklyn Road area with rebuilt housing



There is a community shop, uniformed organisations, a CofE primary school and toddler play parks. The most significant community facility is The Minster's church community centre. The manager of the centre and our foodbank is supervised by the Associate Minister.

The site has multiple rooms, car parking, a commercial kitchen, and the church is a multi-purpose hall with newly installed audio-visual equipment. This is where the Minster's Smart Tots, Warm Hub, foodbank and many other activities take place.

There are activities at Franklyn Road all day, every day. The site is overseen by a local management team, working with the council, on behalf of the PCC. The associate minister represents the PCC on this.

The Minster has a precious relationship with our adjacent CofE school (St Mark's & All Saints, which even has its own small farm on the site) including providing assemblies, Wednesday Youth Cafe, community days on the playing field and interactive activities marking Christian festivals.

There's a congregational team for Morning Worship at Franklyn Rd and this team also supports the Minster's foodbank, community Hub and other mission support from our Franklyn Road site. Judith Hawkey (Locally Authorised Minister in training) is committed to supporting mission and ministry at Franklyn Road.

The Franklyn Road congregation and the centre facility are central to community growth and addressing the challenges some people face. The congregation is particularly welcoming to all and the phrase that best describes the Franklyn Road congregation is "loving, supportive and faithful".



The Garden



Smart Tots



St Mark's & All Saints CE Primary



Event in church



Karen (centre left), Foodbank manager & Michael (right), Franklyn Road congregational team member

The Wider Minster

The other areas that form part of the Minster are Brighton Road Busbridge and Church Street Town Centre.

Brighton Road Busbridge

The Minster's team office is located on the Brighton Road Busbridge site. This is a 1.2 acre facility including gardens and woodland, a multi-purpose church building, community café, car parking, youth base and a community facility. The office is a well equipped hub of prayer, support, energy, planning and witness. The Minster's Yew Tree Cafe is on the site and this offers a great space for meetings.

The Busbridge Brighton Road area is an established residential suburb, which mainly comprises settled high income families and those whose children have left home. There is no business or industry activity. It includes Bargate Wood, a commuter suburb which was built in the 1990s.

There's a close relationship with our Church of England Aided Junior School (BJS) and there are regular assemblies, activities and support for the school. Several church members are school governors. There's also a close relationship with Busbridge Infant School.



There's a large social space called The Rec with bowls, tennis, cricket, football and a children's play park. There are four primary/infant schools, including a prep-school. There are several uniformed organisations which use the village hall or the recreation hut. It is a residential area with many young families. Godalming College is in this area and provides education for 2,000 16-18 year olds.



"God has graciously provided us with strong Minster foundations. We earnestly pray for renewal across the Godalming area that touches each community in a meaningful way. It is a time of expectation!"
~David, Churchwarden

Church Street Godalming Town Centre

The Minster's oldest location is in Church Street, in the town centre of Godalming. This ancient building has several rooms, a kitchen and the church seats at least 500 people. The building requires complete reordering and there are some are plans for this. It has a new audio-visual system and has been partially reordered.

The Church Street area has a high street, Waitrose, Sainsbury's and Homebase. There are multiple cafes and boutique shops. There is housing in the area, including Victorian terraces and offices which have been converted to high quality flats. The town centre has a mix of residents. The majority are young families and private renting couples in good accommodation and who enjoy café, bar and restaurant amenities. The main age group is professional singles and couples in their 20-30s, who are progressing in their field of work and live in properties they can home-work in.

Moss Lane Community School is next to our Church Street location and there's a regular Open the Book assembly in the school. There's a bowls club, community kayaking club, town museum, library, police, fire and ambulance station, Meath epilepsy home and the Borough and Town Councils have their offices in the town. The Minster seeks to works closely with all these groups.



Church Street interior



Church Street exterior

Worship Styles in Hambledon and Franklyn Road

Morning Service Franklyn Road. Weekly 10am

Non robed, usually with clergy collar. Structured around Common Worship with music projected worship videos most weeks. The congregation are used to the worship videos. There are occasionally children present. An all-age approach is offered once a month and some children come to this. There's a great deal of warm hospitality during and after the service.

There are possibilities to develop midweek worship at Franklyn Road, with a strong community feel and a café style of worship and informality.



Morning Worship Hambledon. Weekly 10am

Non-robed with collar, piano or organ with well-known hymns and some worship songs. Some Common Worship structure adopted with flexibility. Monthly communion. There are usually 2-4 children in the congregation and a small Sunday School is provided in the church room which was built 15 years ago. There is a high quality AV system including livestreaming. AV can be relayed to the modern Hambledon vestry room, which was built about 15 years ago.



Messy Church. Monthly at 4pm

Hambledon Village Hall. It's family orientated, mainly with young families. A small team run this and families come from across the area to engage with it.

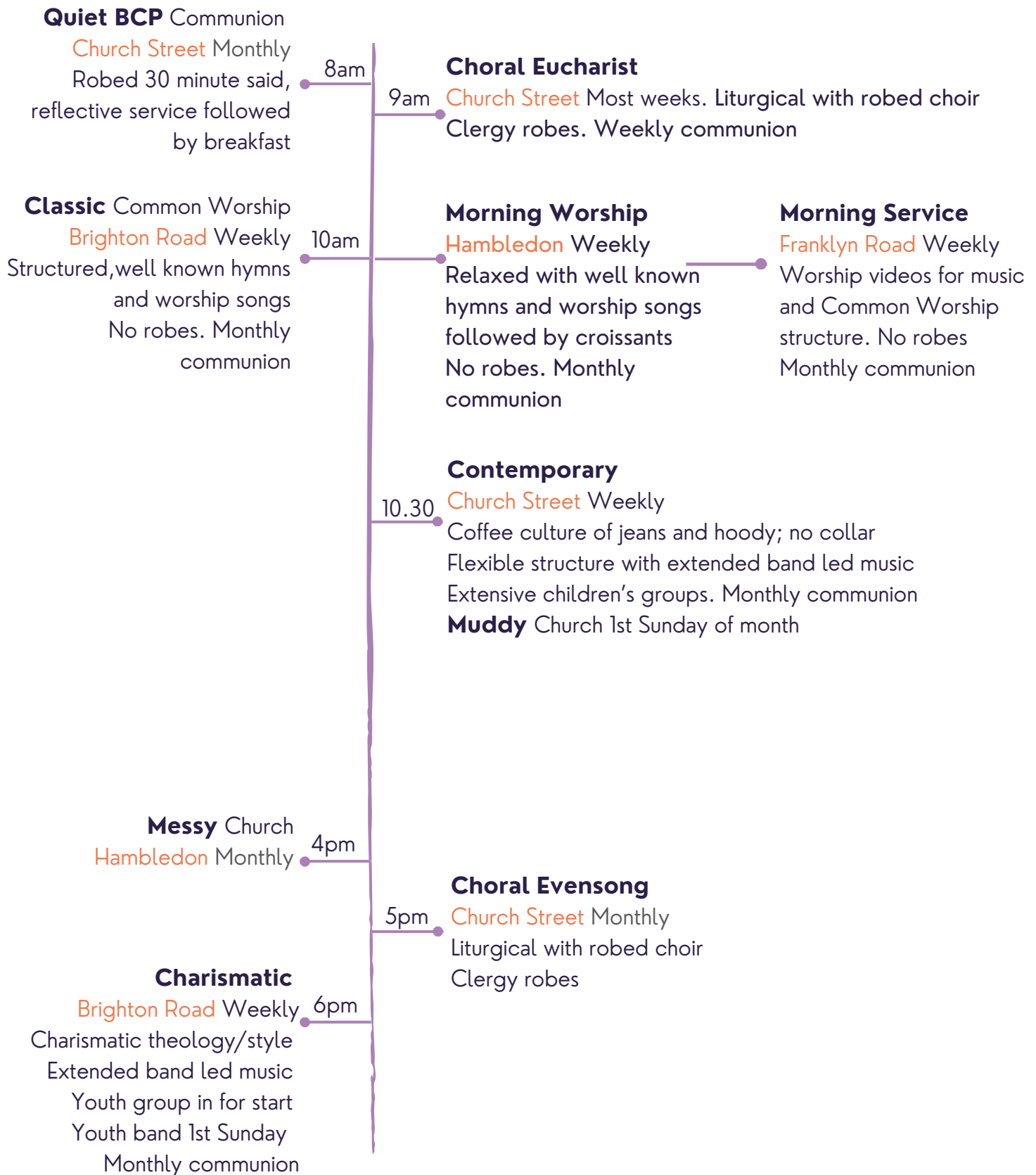
Special services at Hambledon

There are regular occasion/annual services with a wide attendance. They are remarkably relaxed.

These include Hymns and Pimm's, evensong (3 times a year) with a scratch choir (no robes), pub carols (with over 150 people), carols at the village shop (200 attend), pet service (llamas, dogs, tortoises and quail!). Remembrance Day brings much of the village together.

The flow of Sunday worship

You'll be interested to see how each congregation and worship location currently connects across the Minster. We're working out how the flow, timings and connections work best for the future and it's important that the associate ministers have a real passion for raising new leaders and encouraging the growth of teams to serve and lead.



Culture

– what we're like and how we do stuff

- Generous and caring
- Collaborative
- Seek to reach out with the story of our faith in evangelism
- Spiritually hungry for the Word and Spirit of God
- Families matter as we grow younger
- Building people to know Christ
- Local community
- Desiring growth
- Want to have confident faith

We are not perfect. We recognise that we're a busy church with busy people.

We've looked at what we want to be known as being like:

A church with it's heart on fire for Jesus

A pioneering and core element of Godalming

A church with time for you, and life changing depth

Focused on caring and supporting beyond their walls

We exist to draw others in, to learn and to grow

Thriving groups for all ages and places in life

A vibrant church expressed in diverse ways

Bursting with life and drawing everyone in

A place to belong, devoted to each other



The Minster's Staff Team

You'll be joining a friendly, committed, supportive team who enjoy being together. We're outward facing and work closely with many in the local community. There's a great clergy, LLM, Local Assistant Minsters (LAMs) and wider lay team (see: [website/who's who](#)).

We meet regularly for prayer, activity updates, planning and to help one another. The team day usually starts at 9.30am. The team prays together weekly on Mondays in team meetings and there is a daily pause for prayer at 11am for those who are in the office hub at that time. Morning Prayer is conducted across the Minster. There are regular team meetings to support one another in ministry.



The Minster works with many in the community. Supporting Mayors of Waverley and Godalming (Lib Dem), Lord Lieutenant of Surrey & local MP (Cons).

The team can be found on our [website](#). We are currently building our new Minster website and youtube channel but the information is up to date.

Creative, collaborative leadership

There's a collaborative approach to leadership. The Associate Ministers have responsibility for their areas of ministry, congregations and worship and they have the authority to lead on these. They are the visible minister within a locality and there's real scope to bring new ideas to both Hambledon and Franklyn Road.

The Associate Ministers are co-leaders with the Rector. They are members of the Minster's Senior Leadership Team (SLT), Standing Committee and PCC. While each member of the clergy has their own autonomy and areas of leadership, we're a close and supportive team.

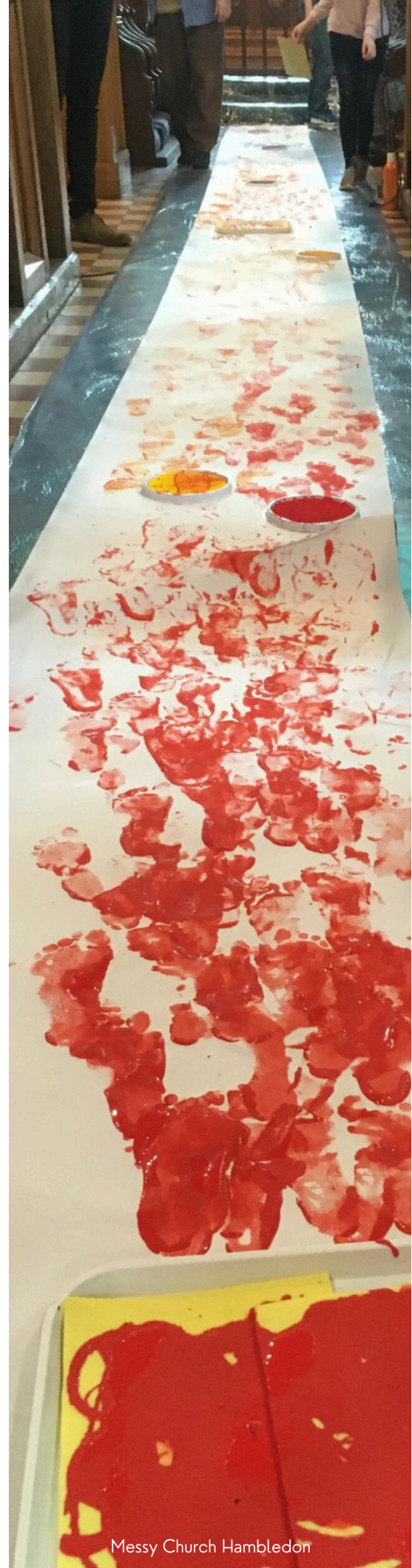
The clergy support one another and staff, those serving and delivering ministry. For example, on occasion you might be asked to help the children's team take a primary school assembly; speak at one of our older people's groups; support the whole Minster holiday club or Light Party and take home communion to church members.



Choir, Church Street Choral Worship

Characteristics of the leaders we're seeking

- Your strong faith, in sympathy with our Patron (CPAS) means you'll have a pastoral, mission, evangelising and discipleship heart
- With your humility, compassion and empathy, you'll be approachable and able to attract people to Christ
- You'll be rooted and renewed in your daily walk with God in prayer and Scripture
- Your communication skills mean you are an able preacher of the Word of God and you can communicate with people from across the Minster's backgrounds
- Your collaborative leadership abilities mean you create teams and build people's involvement in activities
- Comfortable exercising first chair leadership in some contexts and able to switch to second chair leadership in others
- You'll have a gift of raising up new leaders, mentoring them and nurturing them in faith by encouraging them to exercising their gifts
- A person of prayer with conviction in Jesus at the heart of your faith leading you to being a person known to hold a positive outlook and a collegial approach to ministry which builds people up, affirms and values the gifts of others
- With resilience through prayer and scripture, you'll have a quiet inner confidence and knowledge of who you are
- You'll want to be part of a church that has Christ as the cornerstone, scripture as the foundation and the Spirit's guidance as central



Congregational Leadership

We believe in locally based, visible leadership and we try to live out every member ministry to its full. This means that the clergy don't do everything or lead everything. Each congregation has its own leadership team comprising lay people, LLMs and clergy.

Some congregations are completely lay-led and there's autonomy within the congregational leadership for localised decisions.

The Associate Ministers are primarily visible in the congregations that they oversee but actively visit, preach and lead at all congregations. There's opportunity for all clergy to have regular involvement in the 6pm charismatic leading/preaching.

The Associate Minister living in Hambledon oversees Morning Worship in Hambledon and Messy Church, though the focal oversight of Messy Church could live elsewhere depending on the new associate minister's gifts. The associate minister living in Franklyn Road oversees Morning services at Franklyn Road.



Your home



29 Franklyn Road



Orchard Farmhouse

As a member of the clergy, housing is provided. Each property is a four bedroom detached house, has its own off-street parking and backs onto farmland.

The **Franklyn Road** property is 29 Franklyn Road, Godalming, Surrey, GU7 2LD.

This house is in a great location as it is located between the church centre and the church primary school.

The **Hambledon village** property is Orchard Farmhouse, Wormley Lane, Hambledon, GU8 5TS.

This house has recently been purchased and it is on the edge of Hambledon. It is a five minute walk to the village shop.

Each property is less than a 10 minute drive to the Old Rectory team hub in Busbridge. Access to a car is required.



What3Words location ///
perusing.custodian.giggle



What3Words location
/// outermost.lunch.outboard

Roles, Tenure and Finance

The roles are offered as associate ministers under modified common tenure. Some of the funding for the posts comes from different sources, so the arrangements for the roles are described differently.

Associate minister for Hambledon and discipleship.

Funding is currently a two-year rolling appointment, renewed annually. This is because of the way the funding works. Funding comes from both church members via general giving and from Hambledon villagers who are incredibly committed to supporting their local church. Giving through Hambledon church and village is in the region of £110,000pa.

Associate minister for Franklyn Road and mission and evangelism.

Funding (SDF) is currently for a three-year appointment. We hope to renew this role towards the end of the appointment, subject to finances. The SDF funding means that there are some priorities within the role. It is a pioneer-missioner funded post, so it requires someone with missional and evangelistic gifts, for example: to grow a new midweek worshipping community at Franklyn Road, develop a team of people who have a heart for faith-sharing, develop Alpha and the baptism course as a form of evangelism.

All posts are Minster PCC positions. The annual Minster budget is approaching £700,000pa, though there are some financial challenges ahead of us. One of these is our need to reorder Church Street in the town centre. Another is securing ongoing funding for our posts. Our reserves currently stand at c£350,000. Please call to speak about the finances and the roles so that we can explain them and answer any queries.

Next steps

We'd **welcome** an informal conversation. You can call 01483 421267 or email simon.taylor@godalmingminster.org.

**Please send your application to the Clergy Appointments Officer
e: clergy.appointments@cofeguildford.org.uk**

Closing date: 1.30pm on Wednesday 28 August 2024.

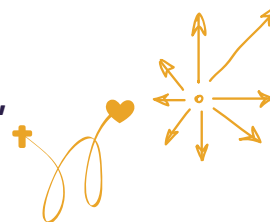
Shortlisting: 4 September 2024.

Provisional interview date: 26 September 2024.



Role:

Pioneer Associate Minister (Missioner) in Franklyn Road (half time), with Minster-wide responsibility for Mission and Evangelism



Key focus of the role

- Lead midweek mission (focal pioneer) into Franklyn Road housing (new and existing) by establishing connections and forming a culturally relevant midweek new worshipping community with new families
- Christian presence in Franklyn Road through residency and seeking to maintain a Sunday congregation at Franklyn Road as the basis for prayer for mission
- Lead Minster-wide mission and evangelism activities, training and material including supporting the existing, or developing new, teams for evangelism, baptism and Alpha course and oversee the strategy for how mission and evangelism activities connect to one another

Specific Areas of Responsibility

Franklyn Road area

- Involvement with community and civic events in Franklyn Road area
- Develop connections with the community in Ockford Ridge and civic organisations which involves listening to the community and to God
- Foster Christian presence within the community which creates relationships, with particular focus on connecting people moving into new housing with those moving back into rebuilt houses over the next five years
- Ensure that the foodbank resource grows significantly in capacity and of those accessing it
- Member of the Church Centre management team and line manager for foodbank/centre manager and to ensure that the Franklyn Road community centre is well managed and has evangelistic outreach
- Work with the Youth Director to support the local church school, St Mark's
- Lead midweek mission into Franklyn Road housing to unreached groups by forming a culturally relevant midweek new worshipping community with new families which is resourced and financially sustainable and create a worshipping community of new Christians by leading and develop a midweek FXC mission team
- Work collaboratively with the Franklyn Road congregational team to develop the worship and lead worship regularly

Minster: mission and evangelism

- Develop faith-sharing and evangelism across the wider Minster, through baptism, Alpha and relational evangelism
- Support teams and activities in delivering both mission and evangelism
- Baptism – working with others, to run Minster baptism courses
- Alpha – working with others, to run Minster Alpha course
- Evangelist mentoring and training –develop an evangelist team for the Minster
- Oversee mission and evangelism strategy for the Minister

Role:

**Minster Associate Minister in Hambledon (half time),
with Minster-wide responsibility for discipleship**



Key Focus of Role

- Christ-centred focal presence in Hambledon including regular (fortnightly) Sunday worship involvement and full-time involvement at key times of the church year
- Lead the established Hambledon Leadership Team which supports mission activities and worship in the village
- Represent the church in the village through involvement in village life through presence in the shop, pub, and at social activities
- Develop discipleship approaches across the Minster to deepen Christ-centred discipleship in prayer, Christian lifestyle and knowledge and spiritual growth

Specific Areas of Responsibility

Christian leadership in the Hambledon area of the Minster

- Represent the church in the village through involvement in village life through presence in the shop, pub and at social activities and organisations
- Seek to shape and develop God's mission of care into the village
- Pastor and care for a faithful flock, developing the pastoral network for the village
- Work collaboratively with the Hambledon congregational team to develop worship
- Introduce fresh, well thought through ideas so we grow more diverse as we seek to follow Jesus
- Lead worship in both formal and informal settings, including the Minster Messy Church in Hambledon village

Minster: Intentional discipleship

- Develop discipleship approaches and form teams across the Minster to deepen Christ-centred discipleship in prayer, Christian lifestyle and knowledge, stewardship, spiritual growth and similar
- Lead on developing people's gifts, so we grow in serving
- With a team, maintain the active home group network



Following Jesus, loving people and renewing faith

For more information please visit our website

WWW.GODALMINGMINSTER.ORG

Or you can find us at:



@GODALMINGMINSTER

GODALMING
MINSTER